



**Double
Cattle Co.**

14th Annual

Bull Sale

April 29/6

Saturday, March 25, 2023 2:00PM
NORTHERN LIVESTOCK SALES, PRINCE ALBERT, SASKATCHEWAN



KELLY, ANGIE, GARRET & JACOB FEIGE

Box 50, Parkside, Saskatchewan
S0J 2A0

Phone: 306-747-2376

Cell: 306-747-7498

kafeige@sasktel.net

www.doublefcattle.com

Our family would like to welcome you to the Double 'F' Cattle Co. 14th Annual Bull Sale.

First, thank you to our past customers for your continued support ...we are very proud to have our bulls in your pastures!

If you are considering a Double 'F' bull for the first time, we work hard to raise these bulls so they will be an asset to your program.

On offer are a strong and consistent set of bulls again this year maybe our best yet. As you page through the catalogue, you will see thickness, width, soundness, testicle development, moderate bw and performance along with proven genetics to back it all up. These are the qualities, we believe are needed to be successful in the cattle industry.

We know everyone is busy so if you are unable to make the sale please contact us and we will get you the best bull for your dollar. Please buy with confidence as DOUBLE 'F' stands behind our bulls 100%.

If you have any questions, please contact myself or any member of the sales team for an honest evaluation of the bulls. You are also welcome to make arrangements to come view the bulls and their dams at the farm.

There will also be videos posted on our website www.doublefcattle.com, FACEBOOK and DLMS prior to sale day.

Thanks again and see you Saturday March 25 at noon for dinner with the sale to follow at 2pm.

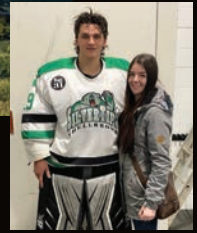
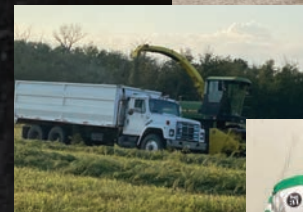
THANK YOU FOR YOUR INTEREST!

Kelly, Angie, Garret and Jacob

THE AUCTION WILL BE LIVE AS WELL AS ON DLMS

Celebrating
80 YEARS
in the purebred industry 1943-2023

Welcome to Double F Cattle Co.



Double 'F' Cattle Co.

14th Annual Bull Sale

Saturday, March 25, 2023 :: Northern Livestock Sales
PRINCE ALBERT, SK :: 2:00 PM

Sale Location - South on Highway #2, turn east on the Elevator Road
(across from Flaman's)

BREEDING GUARANTEE

All bulls will be semen evaluated by a certified veterinarian.
We fully guarantee all bulls sold 100%.

DELIVERY

Free delivery up to 250 miles or receive \$100.00/bull
discount for taking your bull home sale day!

WINTERING

You can send your purchase(s) back to the farm and pick them up at your
convenience by April 15, 2023. Bulls will be kept for a cost of \$3.00/head/day. Bulls
returning to Double 'F' must be insured.

SIGHT UNSEEN PURCHASE PROGRAM

For those of you who cannot attend the sale, we offer a sight unseen purchase
program. Call any one of the sales staff and they will
recommend suitable bulls. Your order will be handled with strict confidence.

TO OUR CATTLEMEN FRIENDS

In order to do what we do we require the help of some very special people. The
advertising included in our catalogue are businesses
that provide us with great service and we hope you will support them. Thank-You!

PICTURES AND VIDEOS

Pictures and videos taken at the beginning of February. Taken by Tyler Harris Photography

VIDEOS

Videos will be available at www.doublefcattle.com

CATALOGUE CREATED BY

14West Creations

DINNER

Please join us for
dinner at noon.
Thank you to J&R
Meats for your
sponsorship.

J & R Meats

**James & Rose Grypiuk
Box 1116, Shellbrook, SK**

Phone: 306-747-2919

"For all your retail & custom needs"

13 km west & 3 km north of Shellbrook, SK

On Offer

48 Yearling Bulls
Black and Red Angus

**AUCTION WILL BE CONDUCTED
LIVE WITH BIDDING ALSO
AVAILABLE ON DLMS**

SALE STAFF

Auctioneer...
Brent Carey (403) 549-2478
Ryan Hurlburt - Ringman (306) 292-9812
Nate Marin - Ringman (306) 869-7130

SALE DAY PHONES

Mark Holowaychuk, OBI (403) 896-4990
Kelly Feige (306) 747-7498
Brandon Sander, sale consultant (306) 747-9034

NORTHERN LIVESTOCK SALES BUYER REPRESENTATIVES

Glen Smith (306) 960-4732
Boyd Stuart (306) 841-7998
Brent Brooks (306) 240-5340

ACCOMMODATIONS

Best Western Premier (306) 703-0308
Super 8 Motel (306) 953-0088
Holiday Inn (306) 730-1000

INSURANCE

Will be available sale day. All bulls returning to Double 'F' must be
insured.

IF YOU NO LONGER WISH TO RECEIVE OUR CATALOGUE
please contact us at kafeige@sasktel.net or 306-747-2376

ONLINE BIDDING - www.DLMS.ca **DLMS**
Mark Shologan (780) 699-5082 www.dlms.ca





PERROT SPARKPLUG 41G



SCHIEFELBEIN SHOWMAN 338

REFERENCE *sires*



PEAK DOT ROUGHRIDER 12G



MERIT STING 7047E



DWAJO REALLY WINDY 38G



DFCC 4838 EL KNUCKLES 25E



RED CINDER BRAVO 683H



RED COCKBURN PENDLETON 9095



OBI Livestock Ltd.

Mark Holowaychuk (403)896-4990
Roger Peters (403)828-9815
Kylie Simpson (780)385-8446
Jesse Emery (780)284-3490
Email:
o.b.i@shaw.ca
Website:
www.cattlemanagement.ca

WELCOME FROM OBI LIVESTOCK LTD.

It is my pleasure to be working the Feige Family in their 14th Annual Bull Sale.

Double F Cattle Co. once again has put forth a top notch offering of purebred and commercially worthy bulls to town. The bull pen this year is as strong as ever, with loads of meat and muscle bulls for your appraisal. The cows are all close to see the dams of these future herd bull candidates. This year a lot of new sire groups will be featured for the repeat customer. The herd bull battery Double F has obtained is one to always follow as the family continues to source new genetics to make their herd better all the time. It sure has worked over the past years; Kelly and I visit for hours and hours for the next herd bull for those sought after genetics.

This will be the third year, Double F Cattle Co. has Red Angus bulls on offer and this year the pen is very solid across the board with great hair, deep sided, large topped bulls with the ability to move very well. These bulls can be used in the purebred operations or the commercial ones.

If I can help you in any way, please do not hesitate to call me or call the Feige Family or any of the other sales staff and we will help you with your needs. See you in Prince Albert on the 25th of March.

Mark Holowaychuk
OBI Livestock Ltd.
(403)896-4490

Edam Fall Fair 2022



2022 Edam Fall Fair Grand Champion Pen of 3 Open Heifers



2022 Edam Fall Fair Grand Champion Ranchers Choice Heifer

R&L FEEDS & AUTO

DON CLARK/TANYA NIELSEN | 200 RAILWAY AVE W
 306-883-2419/883-2506 | BOX 907 SPIRITWOOD, SK
 rlfeeds1@sasktel.net | SOJ 2MO

WE SELL QUALITY NAPA AUTO PARTS!

Johnson Enterprises LTD.
 306-466-6500 Leask, SK

**Trucking, Gravel Sales,
 Land Clearing &
 Excavation Services**

Working with the folks at Double F on their nutrition program has been a pleasure. Their attention to detail when developing their bulls and females is unmatched, resulting in an elite set of performance driven Angus bulls. I hope you can make it in person to see this year's offering.

The cowherd utilizes a year-round organic mineral program that is balanced to the cow's requirements and feed sources. This supports proper bull calf health and development from a young age. The bull development program is built to maximize forage utilization and gut health. All forages are sampled and analyzed to ensure quality feed sources are used. Once the calves are weaned, they are slowly transitioned to a TMR. The TMR is forage based and is designed to promote lean muscle growth, allowing the bulls to express their genetic potential. Rumen health is of utmost importance, which is why suitable protein sources and proper starch levels are fed to the bulls.

Double F uses a total nutrition program on their entire operation, ensuring optimal performance and health of their cattle. If you have any questions about the nutrition of the sale bulls, please feel free to call.

Good luck on sale day!

BULLSEYE

Ryley Noble
 Beef Advisor

(587) 217-9599
 ryley.noble@bullseyefeeds.ca

© More Than Just Food

Black Angus Yearling Bulls

Lot
31



Lot
31K

DFCC 338 **KRAKEN** 31K
2272250 DFCC 31K January 28, 2022

performance

BW 79
Sep 27 980

Sire **SCHIEFELBEIN SHOWMAN 338** SCHIEFELBEIN ATTRACTIVE 4565
FROSTY ELBA 3745
dam **DFCC 244B FATE 42F** SIX MILE COMPLETE 244B
MJT ATLANTA 257X

- One word describes this bull – **ROCK STAR!**
- **31K** has everything stoutness, muscle mass, thickness, hair, dimension and overall performance.
- low bw but has pushed down the scales since.
- Tremendous cow family! these '**COMPLETE**' daughters have proven to be the real deal with excellent udders.
- **selling full possession and retaining 1/3 semen interest.**

CE	BW	WW	YW	MCE	MILK
6.0	1.0	68	126	7.0	30

Lot
13



Lot
13K

DFCC 41G **KALEN** 13K
2267931 DFCC 13K January 19, 2022

performance

BW 64
Sep 27 880

Sire **PERROT SPARKPLUG 41G** LD CAPITALIST 316
PERROTS BLACKBIRD 16E
dam **DFCC 323C GRETTA 6G** U-2 CASH ADVANCE 323C
DFCC 1Z EMILIE 20E

CE	BW	WW	YW	MCE	MILK
11.0	-0.6	57	92	11	19

- rugged, wide based bull that will be an asset to any program.
- lots of hair and style.

Lot
8



Lot 8K
DFCC 12G KADE 8K
 2267927 DFCC 8K January 17, 2022

performance
 BW 76
 Sep 27 980

sire PEAK DOT ROUGHRIDER 12G ELLINGSON ROUGHRIDER 4202
 PEAK DOT BARDOLIA 19C

dam DFCC 25E HEART BREAKER 95H DFCC 4838 EL KNUCKLES 25E
 DFCC 36Z BRANDI104B

CE	BW	WW	YW	MCE	MILK
2.0	2.2	66	111	7.0	29

- A bull you can't help but get excited about!
- tanky bull that still has great length.
- depth, muscle and hair.
- heifer's 1st calf.
- high performance BW 76lbs Sept WW 855lbs
- **KNUCKLE'S** daughter dam is one of those females you like to show off.

Lot 16K
DFCC 41G KAI 16K
 2267932 DFCC 16K January 20, 2022

performance
 BW 86
 Sep 27 940

sire PERROT SPARKPLUG 41G LD CAPITALIST 316
 PERROTS BLACKBIRD 16E

dam DFCC 51C FOREVER 51F DFCC 36Z CAPITAL 15C
 CFS LADY 87P

CE	BW	WW	YW	MCE	MILK
2.0	2.4	62	90	6.0	24

- Hard to fault this guy stout and well made!
- His big rib and huge top will get your attention right away.



Lot
17



Lot
17K

performance

BW 87
Sep 27 840

DFCC 25E **KAILO** 17K

2267933 DFCC 17K January 21, 2022

sire DFCC 4838 EL KNUCKLES 25E

S A V SEEDSTOCK 483
CFS QUEENETTE 3T

dam DFCC 33T SWEET AND SASSY 9X

SOUTHLAND OLD SKOOL 33T
EGGEN BIG SKY 16K MISS 99M

CE	BW	WW	YW	MCE	MILK
1.0	2.9	43	78	5.0	24

- One of those good all around bulls that puts it all together.
- Stacked with maternal strength.
- Keep all daughters.

Lot
26



Lot
26K

performance

BW 81
Sep 27 970

DFCC 41G **KANE** 26K

2267937 DFCC 26K January 26, 2022

sire PERROT SPARKPLUG 41G

LD CAPITALIST 316
PERROTS BLACKBIRD 16E

dam DFCC 1Z CANDY 136C

K-COW WINDMILL 1Z
DFCC 32T HOT GIRL 37W

CE	BW	WW	YW	MCE	MILK
4.0	1.8	64	99	6.0	28

- AKA **KING WILLY** has a herd bull presence about him!
- **26K** keeps getting better and better everyday...really hard to part with!!! You will take a beer or two to the pasture just to sit and admire him.
- tonnes of butt, top and rib!!!!
- **KING WILLY** has a kick ass dam with a great udder
- **SPARK PLUG** sired an excellent and consistent set of bulls again this year

Lot
21K

DFCC 7047E **KAIZER** 21K
2267935 DFCC 21K January 23, 2022

Lot
21



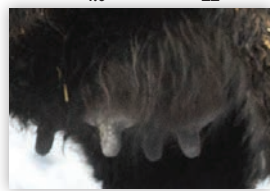
performance
BW 85
Sep 27 835

sire **MERIT STING 7047E**
dam **DFCC 1Z EMMA 30E**

BAR S RANGE BOSS 4002
MERIT SOCIALITE 5121C
K-COW WINDMILL 1Z
DFCC 176W STELLA 79Y

CE	BW	WW	YW	MCE	MILK
0.0	3.3	48	77	4.0	22

- **21K** stops you in your tracks!!!
- His style, muscle, big rib and huge top make him a stand out!
- Full brother working at **MOVIN ON FARMS.**



TYPICAL STING UDDER

Lot
29



Lot
29K

DFCC 41G **KAM** 29K
2267938 DFCC 29K January 27, 2022

performance
BW 86
Sep 27 930

sire **PERROT SPARKPLUG 41G**
dam **DFCC 5Y DELTA 48D**

LD CAPITALIST 316
PERROTS BLACKBIRD 16E
NORSEMAN KODIAK 5'11
DFCC 60P MARIA 34U

- **29K** shows off his stoutness, barrel and power.
- Add pay weight to your calf crop.
- Excellent proven pedigree.

CE	BW	WW	YW	MCE	MILK
2.0	29	64	100	6.0	24

lot
27



lot
27K

performance

BW 76
Sep 27 890

DFCC 338 **KONG** 27K
2272244 DFCC 27K January 26, 2022

sire **SCHIEFELBEIN SHOWMAN 338** SCHIEFELBEIN ATTRACTIVE 4565
FROSTY ELBA 3745
dam **DFCC 13E HILARY 71H** GF BARELY LEGAL 13E
MJT ERICA 528T

CE	BW	WW	YW	MCE	MILK
4.0	2.7	69	128	6.0	30

- **KONG** has a presence commanding your attention!
- A sharp looking bull that your neighbors will be talking about!!
- Low bw.
- His performance will add money to your pocket.
- 1st calf heifer.

lot
30



lot
30K

performance

BW 80
Sep 27 855

DFCC 25E **KANO** 30K
2267941 DFCC 30K January 28, 2022

sire **DFCC 4838 EL KNUCKLES 25E** S A V SEEDSTOCK 483
CFS QUEENETTE 3T
dam **DFCC 15C FRESH 76F** DFCC 36Z CAPITAL 15C
DFCC 176W BROOK 24B

CE	BW	WW	YW	MCE	MILK
3.0	1.9	45	63	6.0	25

- True power here...will make you turn your head and take a second look.
- **30K** has impressive length, quarter, hair and length.
- Moderate bw with performance.

lot
40



lot
40K

performance

BW 75
Sep 27 760

DFCC 41G **KASH** 40K
2267945 DFCC 40K January 30, 2022

sire **PERROT SPARKPLUG 41G** LD CAPITALIST 316
PERROTS BLACKBIRD 16E
dam **CFS QUEENETTE 3T** LLB FULLBACK 27M
SANDY BAR QUENETTE 404J

CE	BW	WW	YW	MCE	MILK
6.0	0.8	38	68	7.0	27

- Might be the sleeper of the sale...don't overlook this guy!!!
- Dam is Jake's legendary **3T** cow, who had produced many higher sellers at our sale.
- We lost **3T** this year so this will be her last progeny to be on offer.
- Maternal sister was a high seller in '**LADIES OF THE WEST**' sale.



MATERNAL SISTER

Lot
42K

DFCC 38G **KANSAS** 42K
2267947 DFCC 42K January 30, 2022

performance

BW 81
Sep 27 830

sire **DWAJO REALLY WINDY 38G** DWAJO REALLY WINDY 60C
DWAJO JESTRESS 119Z
dam **FREYBURN ENCHANTRESS 94D** MERIT GENESIS 1077
GERLEI ENCHANTRESS 68Y

CE	BW	WW	YW	MCE	MILK
0.0	2.5	49	81	7.0	19

- Big, stout, long stretchy smooth made bull.

Lot
42



Lot
44K

DFCC 41G **KASEY** 44K
2267949 DFCC 44K January 30, 2022

performance

BW 78
Sep 27 850

sire **PERROT SPARKPLUG 41G** LD CAPITALIST 316
PERROTS BLACKBIRD 16E
dam **DFCC 15C FOREVER LADY 110F** DFCC 36Z CAPITAL 15C
TRIPLE L PRIDE 7T

CE	BW	WW	YW	MCE	MILK
7.0	1.0	62	97	9.0	20

- Admire this bull for his straight top and big ass.
- These **SPARK PLUGS** are stamped the same.
- A favorite around here.
- Like the dam a lot.

Lot
44



Lot
48K

DFCC 41G **KELLER** 48K
2267953 DFCC 48K January 30, 2022

performance

BW 85
Sep 27 960

sire **PERROT SPARKPLUG 41G** LD CAPITALIST 316
PERROTS BLACKBIRD 16E
dam **MJT ERICA 528T** 20/20 SHOW OFF 29R
MJT ERICA 1J

CE	BW	WW	YW	MCE	MILK
3.0	2.5	60	87	6.0	25

- Big frame, lots of power, great feet and a bull that will get out a cover a lot of cows.
- Old **MJT 'T'** cow brings a good one in every year.

Lot
48



Take Advantage of our
SIGHT UNSEEN PROGRAM
Call Kelly for more information 306-747-7498

Lot
49



Lot
49K

2267960

DFCC 49K

DFCC 41G **KY** 49K

January 30, 2022

performance

BW 78
Sep 27 730

sire **PERROT SPARKPLUG 41G**

LD CAPITALIST 316
PERROTS BLACKBIRD 16E

dam **DFCC 7047E HONEY SUCKLE 105H**

MERIT STING 7047E
DFCC 488Z CHICKY 72C

CE	BW	WW	YW	MCE	MILK
3.0	3.0	58	92	5.0	25

- Moderate, square made bull ... solid from front to back.
- Dam is 1st calf heifer that has a bright future here.

Lot
52



Lot
52K

2267961

DFCC 52K

DFCC 7047E **KELSO** 52K

February 02, 2022

performance

BW 84
Sep 27 770

sire **MERIT STING 7047E**

BAR S RANGE BOSS 4002
MERIT SOCIALITE 5121C

dam **DFCC 5X ANNAMARIE 75A**

YOUNG DALE XPORT 5X
DBRL IM BLACKBIRD 94U

CE	BW	WW	YW	MCE	MILK
1.0	3.2	41	72	4.0	24

- A great **STING** son with size, power and loads of hair ... will be easy to pick out sale day.

Lot
53



Lot
53K

2272254

DFCC 53K

DFCC 338 **KADETT** 53K

February 02, 2022

performance

BW 77
Sep 27 790

sire **SCHIEFELBEIN SHOWMAN 338**

SCHIEFELBEIN ATTRACTIVE 4565
FROSTY ELBA 3745

dam **DFCC 244B DEW 99D**

SIX MILE COMPLETE 244B
DFCC 32T FOREVER 75W

CE	BW	WW	YW	MCE	MILK
8.0	0.2	53	100	8.0	27

- Impressive **SHOWMAN** son that shows off his style and loads of muscle expression.
- These **SHOWMAN** bulls have so much eye appeal.
- Dam is a powerful cow... the kind you want a pasture full of.

Lot
58K

2267966 DFCC 7047E **KENNY** 58K
DFCC 58K February 06, 2022

Lot
58



performance
BW 84
Sep 27 930

sire **MERIT STING 7047E**

BAR S RANGE BOSS 4002
MERIT SOCIALITE 5121C

dam **DFCC 1Z ERYN 32E**

K-COW WINDMILL 1Z
DFCC 176W BREANNE 85B

CE	BW	WW	YW	MCE	MILK
2.0	3.1	60	97	5.0	24

- **KENNY** has a big thick rear quarter, big top and extra length.
- **58K** is just one of those good bulls you like more and more every day.

Lot
60



Lot
60K

2272255 DFCC 338 **KRYPTONITE** 60K
DFCC 60K February 07, 2022

performance
BW 71
Sep 27 900

sire **SCHIEFELBEIN SHOWMAN 338**

SCHIEFELBEIN ATTRACTIVE 4565
FROSTY ELBA 3745

dam **DFCC 5Y BAILEE 119B**

NORSEMAN KODIAK 5'11
MJT DARK DUCHESS 760U

CE	BW	WW	YW	MCE	MILK
9.0	-0.1	66	123	10.0	25

- **60K** grabs your attention with his style, huge hip and presence.
- The type of bull you will want to show off!
- Excellent cow family.
- Thought of keeping this bull.

Lot
67



Lot
67K

DFCC 126H **KRUSH** 67K
2275478 DFCC 67K February 10, 2022

performance

BW 69
Sep 27 930

sire **HF CENTER STAGE 126H**

SCHIEFELBEIN SHOWMAN 338
HF MISS ERICA 141Z

dam **ROY MAC ATALANTA 23H**

JOHNSTON ANGUS VALLEY 802B
ROY MAC ATALANTA 4C

- When you see this bull... you think this is the one!!!! **HE IS A STUD!!**
- Heavy bone, huge ass, big top and full of red meat.
- Low bw with plenty of performance.
- Heifer's first calf.
- Lots to offer here!!!!

CE	BW	WW	YW	MCE	MILK
8.0	0.9	74	133	9.0	26

Lower input costs (eliminate Nitrogen fertilizer), provide a balanced feed ration & improve soil resiliency. Regrowth.

Mark Washko
Haweswood, Saskatchewan
For me, it's about soil health & relying less on synthetic inputs. The wide silage window for cutting makes it really easy to work with.

Peter Penner
Wilton, Saskatchewan
The growth there was in a weeks was crazy! It was difficult driving a quad through.

Devin Waterhouse
Wilton, Saskatchewan
We seeded these two Monks (Full Season & Warm Season) the first week in July. If we are being completely honest - we had no idea what we were doing. After last year's drought, we decided to take the risk and try something new. Even with ideal growing conditions - the results far exceeded our expectations.

Chell Doud
Tachin, Saskatchewan
We seeded the Warm Season Cover crop in the middle of June looking to improve soil health and using it to swath graze. We were very pleased with the outcome. Did not use fertilizer and saved some diesel to boot.

CHANCE ROTHWELL

Branta Lake Ranch
rothwell1202@hotmail.com
(306) 714-7334

WWW.COVERSANDCO.CA

COVERS&CO.

Lot
71



STRONGBOW UDDER

Lot
71K

2267970

DFCC 71K

DFCC 25E **KEY** 71K
February 13, 2022

performance

BW 77
Sep 27 820

sure **DFCC 4838 EL KNUCKLES 25E**

S A V SEEDSTOCK 483
CFS QUEENETTE 3T

dam **DFCC 107D GLITZ 20G**

BAR-E-L STRONGBOW 107D
DFCC 22W MISTY 71Y

- Wide based, big butt and extra thickness through out.
- Top producing **STRONGBOW** dam
- Check out the gains on this guy!
- Definite **HERD BULL** pick!!!

CE	BW	WW	YW	MCE	MILK
3.0	2.2	53	87	5.0	26

Lot
76K

2267972

DFCC 76K

DFCC 25E **KIP** 76K
February 15, 2022

performance

BW 82
Sep 27 930

sure **DFCC 4838 EL KNUCKLES 25E**

S A V SEEDSTOCK 483
CFS QUEENETTE 3T

dam **DFCC 488Z CHICKY 72C**

MJT TOUCH DOWN 488Z
DFCC 71X ALICE 20A

- Solid bull with a top you could play cards on!
- Both **76K** and his mother are popular with visitors here.

CE	BW	WW	YW	MCE	MILK
4.0	1.9	59	100	7.0	28

Lot
76



Lot
81



Lot **81K** DFCC 38G **KAIZER** 81K
 2298012 DFCC 81K February 16, 2022

performance
 BW 83
 Sep 27 780

sire DWAJO REALLY WINDY 38G DWAJO REALLY WINDY 60C
 DWAJO JESTRESS 119Z

dam DFCC 744D FLORA 68F HLC VENOM 744D
 LODGE PRIDE 39Y

CE	BW	WW	YW	MCE	MILK
5.0	0.0	34	56	4.0	18

• The more you look at **KAIZER** the more you find something you like about him but what makes **81K** really special is his dam.

Lot
83



Lot **83K** DFCC 25E **KERMIT** 83K
 2267974 DFCC 83K February 17, 2022

performance
 BW 86
 Sep 27 870

sire DFCC 4838 EL KNUCKLES 25E S A V SEEDSTOCK 483
 CFS QUEENETTE 3T

dam DFCC 176W SASHA 91Z HF HEMI 176W
 CALLAMERE BLACKCAP 32K

CE	BW	WW	YW	MCE	MILK
-2.0	2.7	57	88	3.0	22

• Has the pedigree to sire some very useful females and his sons will push the scales down.

Lot **91K** DFCC 41G **KIX** 91K
 2267980 DFCC 91K February 20, 2022

performance
 BW 87
 Sep 27 810

sire PERROT SPARKPLUG 41G LD CAPITALIST 316
 PERROTS BLACKBIRD 16E

dam DFCC 30C ERIKA 3E DFCC 1Z CAPITAL ONE 30C
 DFCC 36Z CORRIE 116C

CE	BW	WW	YW	MCE	MILK
3.0	1.9	60	94	4.0	21

• a moderate framed long bodied bull.

Lot **102K** DFCC 7047E **KODA** 102K
 2267989 DFCC 102K March 02, 2022

performance
 BW 87
 Sep 27 700

sire MERIT STING 7047E BAR S RANGE BOSS 4002
 MERIT SOCIALITE 5121C

dam DFCC 5Y ANDREA 35A NRA ABERDEEN 5Y
 DFCC 22W MISTY 71Y

CE	BW	WW	YW	MCE	MILK
2.0	3.3	46	82	5.0	24

• A younger bull that puts it all together!

Lot
91



Lot
102



Lot
101



Lot
101K

performance

BW	81
Sep 27	880

2267988 DFCC 41G **KNOX** 101K
DFCC 101K March 02, 2022

sire **PERROT SPARKPLUG 41G** LD CAPITALIST 316
 PERROTS BLACKBIRD 16E

dam **DFCC 7047E GRACIE 91G** MERIT STING 7047E
 DFCC 244B DEW 99D

- There is not much not to like about this bull!!!
- Soggy well made with a low bw, extra length and shape.
- Just love these **STING** daughters.

CE	BW	WW	YW	MCE	MILK
5.0	1.2	67	89	6.0	25

Lot
114K

performance

BW	87
Sep 27	910

2268286 DFCC 41G **KAT** 114K
DFCC 114K March 16, 2022

sire **PERROT SPARKPLUG 41G** LD CAPITALIST 316
 PERROTS BLACKBIRD 16E

dam **DFCC 1Z ELLY 78E** K-COW WINDMILL 1Z
 DFCC 32T FOREVER 9W

CE	BW	WW	YW	MCE	MILK
1.0	3.1	71	106	6.0	22

- Bigger **SPARKY** has power, stoutness, maternal strength and overall quality.
- **114K** should be on your list!





Lot
115

Lot
115K DFCC 38G **KURT** 115K
2268288 DFCC 115K March 17, 2022

performance

BW 84
Sep 27 760

sire **DWAJO REALLY WINDY 38G**

DWAJO REALLY WINDY 60C
DWAJO JESTRESS 119Z

dam **DFCC 13E GIRLFRIEND 3G**

GF BARELY LEGAL 13E
DFCC 176W SASHA 91Z

CE	BW	WW	YW	MCE	MILK
2.0	2.4	52	87	5.0	21

- Top **DWAJO** bull.
- Great style, length, barrel, shape and smoothness.

Lot
119K DFCC 25E **KYLE** 119K
2268295 DFCC 119K March 22, 2022

performance

BW 80
Sep 27 730

sire **DFCC 4838 EL KNUCKLES 25E**

S A V SEEDSTOCK 483
CFS QUEENETTE 3T

dam **DFCC 28Y ELYZA 67E**

LODGE PENDLETON 28Y
DFCC 60P MARIA 34U

CE	BW	WW	YW	MCE	MILK
4.0	1.8	43	76	7.0	25

- Young **KNUCKLES** bull.
- Big rib and hip.
- With this pedigree **119K** should sire some top notch females and steers full of red meat.



Lot
119

Lot
124



- Garret's bull!
- Built just like him thick, muscular and hairy!!!!
- Young April bull.
- **MJT** cow that knocks it out of the park every year!
- **124K'S** dam is the grandmother of **31K**

Lot
124K DFCC 25E **KYLER** 124K
2268496 DFCC 124K April 04, 2022

performance

BW 80
Sep 27 730

sire **DFCC 4838 EL KNUCKLES 25E**

S A V SEEDSTOCK 483
CFS QUEENETTE 3T

dam **MJT ATLANTA 257X**

GEIS KODIAK 53'07
R & M 27J ATALANTA 84L

CE	BW	WW	YW	MCE	MILK
1.0	2.5	52	93	5.0	28

Red Angus Yearling Bulls

Lot
4



Lot
4K

2267922 Red DFCC 683H **KACE** 4K
DFCC 4K January 16, 2022

performance

BW 85
Sep 27 950

sire **RED CINDER BRAVO 683H**

RED COCKBURN ASSASSIN 624D
RED CINDER LASHES 883E

dam **RED KENRAY ROSE 11G**

RED KENRAY STAUNCH 61D
RED KENRAY ROSE 86E

- **THE REAL DEAL!!! HERD BULL CANDIDATE!**
- A dark footed **CINDER** son.
- Tons of shape, power and rib.
- **4K'S** calves will have those added pounds.
- Really like this **KENRAY** dam.

CE	BW	WW	YW	MCE	MILK
-3.0	1.9	62	114	1.5	28

Thank you

TO ALL OF OUR SPONSORS

RASK
Tax Service Ltd.

R.R. 1 Birch Hills, SK S0J 0G0 Ph: 749-2275

Dennis Rask
749-2759

Darrin Rask
749-3180

Fax: 749-2235

NORHEIM NOR RANCHING

Your Livestock Equipment Specialists



306.955.1350

NORHEIMRANCHING.COM

Lot 2



Lot 11



Lot 2K

2275279 Red DFCC 195D **KRUZ** 2K
DFCC 2K January 09, 2022

performance

BW 63
Sep 27 790

Sire **RED U2 MALBEC 195D**

RED U-2 RECKONING 149A
RED U-2 MABEL 60A

dam **RED NRA MAGGIE 126E**

RED JENSEN DEMO 6C
RED NU-HORIZON MAGGIE 201Z

CE	BW	WW	YW	MCE	MILK
10.0	-2.3	31	46	11.0	22

- Low bw bull with performance.
- Moderate frame with lots of muscle.
- Heifer bull.

Lot 11K

2298004 Red DFCC 195D **KORT** 11K
DFCC 11K January 19, 2022

performance

BW 80
Sep 27 890

Sire **RED U2 MALBEC 195D**

RED U-2 RECKONING 149A
RED U-2 MABEL 60A

dam **RED EYE HILL LASS 161Z**

RED MLK CRK LANCER 0119
RED EL-DEE LASS 571R

CE	BW	WW	YW	MCE	MILK
7.0	-1.1	39	62	6.5	20

- a solid sound made bull.
- **EYE HILL** dam with an awesome udder and is a front pasture cow.

Lot 19K

2267934 Red DFCC 683H **KAISER** 19K
DFCC 19K January 22, 2022

performance

BW 77
Sep 27 900

Sire **RED CINDER BRAVO 683H**

RED COCKBURN ASSASSIN 624D
RED CINDER LASHES 883E

dam **RED WRAZ BARONESS 57G**

RED ACC BIG SHOT 118E
RED WRAZ BARONESS 49B

CE	BW	WW	YW	MCE	MILK
1.0	1.7	58	98	3.0	29

- Bigger frame **BRAVO** son.
- **19K** is built like a freight train but doesn't give up width and smoothness.
- Impressed with the production of this young **WRAZ** cow.

Lot 20K

2268608 Red DFCC 95G **KAISON** 20K
DFCC 20K January 22, 2022

performance

BW 75
Sep 27 790

Sire **RED COCKBURN PENDLETON 909S**

RED SVR CONTINENTAL 112E
RED COCKBURN CORA 326A

dam **RED U2 FEATURE 259E**

RED U-2 REVERENCE 198C
RED U-2 FEATURE 217C

CE	BW	WW	YW	MCE	MILK
6.0	-0.1	31	56	9.0	23

- A tank of a bull with length and a huge ass.
- low bw
- **BRICK SHIT HOUSE!!**
- Really happy with the production from these **U2 COWS** we purchased.

Lot 19



Lot 20



Lot
25K

2268607 Red DFCC 95G **KALE** 25K
DFCC 25K January 24, 2022

performance

BW 79
Sep 27 830

sire **RED COCKBURN PENDLETON 9095** RED SVR CONTINENTAL 112E
RED COCKBURN CORA 326A

dam **RED PACIFIC ENVIOUS 11C** RED MINBURN COPENHAGEN 3Y
RED U-2 ENVIOUS 7204T

CE	BW	WW	YW	MCE	MILK
3.0	0.8	40	71	7.0	21

- attractive and sound made.
- admire his rib shape.

Lot
25



Lot
34K

2297987 Red DFCC 9095 **KEY** 34K
DFCC 34K January 28, 2022

performance

BW 87
Sep 27 950

sire **RED COCKBURN PENDLETON 9095** RED SVR CONTINENTAL 112E
RED COCKBURN CORA 326A

dam **RED EXCEL BARB 909G** RED WINDY HILL ZEPPELIN 1240Z
RED GLESBAR BARB 112Z

CE	BW	WW	YW	MCE	MILK
-3.0	3.6	54	90	6.0	26

- cherry red.
- a very complete bull with performance.



RED EXCEL BARB 909G

Lot
34





NABER FORD

SHELLBROOK
(306)747-2213 | naberford.ca



NABER
POWERSPORTS

MERCURY PRINCECRAFT
Kawasaki SeaRay

(306)747-6100 | naberpowersports.com



Lot
41



Lot
41K

Red DFCC 95G **KANNON** 41K
2267946 DFCC 41K January 30, 2022

performance

BW 85
Sep 27 730

Sire **RED COCKBURN PENDLETON 9095** RED SVR CONTINENTAL 112E
RED COCKBURN CORA 326A

dam **RED U-2 MISTY 162C** RED U-2 AUTHENTIC 139A
RED U-2 MISTY 151X

CE	BW	WW	YW	MCE	MILK
2.0	2.5	40	85	6.0	22

- Impressive **PENDLETON** son.

Lot
46



Lot
46K

Red DFCC 95J **KASHTON** 46K
2267951 DFCC 46K January 30, 2022

performance

BW 84
Sep 27 850

Sire **RED COCKBURN PENDLETON 9095** RED SVR CONTINENTAL 112E
RED COCKBURN CORA 326A

dam **RED U-2 INATEXXI 130D** RED U-2 RECON 192Y
RED U-2 INATEXXI 301Z

CE	BW	WW	YW	MCE	MILK
0.0	2.5	40	90	6.0	29

- **46K** is just a great bull and checks a lot of boxes so much potential here!
- **BIG TIME HERD BULL PROSPECT.**
- Will make everyone sit up and take notice sale day.



Lot 47
Red DFCC 683H KEELER 47K
 2267952 DFCC 47K January 30, 2022

performance
 BW 79
 Sep 27 760

sire RED CINDER BRAVO 683H RED COCKBURN ASSASSIN 624D
 RED CINDER LASHES 883E

dam RED EYE HILL MS POTEET 17F RED FLYING K ROOSEVELT 46C
 RED EYE HILL POTEET 1618

CE	BW	WW	YW	MCE	MILK
2.0	1.4	44	75	6.0	25

- Like this bull a lot but what is not to like ... great style and muscle.
- a very productive **EYE HILL** dam.



Lot 64
Red DFCC 95G KENT 64K
 2267968 DFCC 64K February 08, 2022

performance
 BW 82
 Sep 27 840

sire RED COCKBURN PENDLETON 9095 RED SVR CONTINENTAL 112E
 RED COCKBURN CORA 326A

dam RED WARD'S BLACKBIRD 42E RED JLL SIGNATURE 49B
 RED WARD'S BLACKBIRD 2B

CE	BW	WW	YW	MCE	MILK
2.0	1.8	45	81	7.0	18

- extra length of body with a beautiful front end .
- with the maternal strength here... you will want to keep the females.

Lot 66K
Red DFCC 683H KETCH 66K
 2267969 DFCC 66K February 10, 2022

performance
 BW 73
 Sep 27 710

sire RED CINDER BRAVO 683H RED COCKBURN ASSASSIN 624D
 RED CINDER LASHES 883E

dam RED DFCC 147F HOT GIRL 5H RED U2 EMBLEM 147F
 RED U-2 GEORGINA 483B

CE	BW	WW	YW	MCE	MILK
2.0	1.7	50	85	4.0	25

- You will notice **66K** right away.
- Heifer bull
- Good bull here.

Lot 74K
Red DFCC 96G KART 74K
 2270813 DFCC 74K February 14, 2022

performance
 BW 70
 Sep 27 790

sire RED RSL FLOYD 96G RED U2 FOREIGNER 478E
 RED RSL BITTER SWEET 235D

dam RED BMB CATERINA 557H RED LAZY MC HOLLYWOOD 127C
 RED BMB CATERINA 674B

CE	BW	WW	YW	MCE	MILK
6.0	0.4	45	76	5.0	25

- Heifer's 1st calf
- Long bodied bull with a strong top backed by a hard working 'BMB' mother.



Lot
75



Lot
75K

Red DFCC 95G **KIRK** 75K
2268606 DFCC 75K February 14, 2022

performance

BW 90
Sep 27 730

sire **RED COCKBURN PENDLETON 9095** RED SVR CONTINENTAL 112E
RED COCKBURN CORA 326A

dam **RED U-2 BEAUTY 306A** RED U-2 BIG LEAGUE 544R
RED FLYING K BEAUTY 28U

CE	BW	WW	YW	MCE	MILK
-3.0	2.8	32	75	1.0	23

- A super cool made bull that catches your eye in the pen.

Lot
77



Lot
77K

Red DFCC 78H **KLUE** 77K
2270811 DFCC 77K February 16, 2022

performance

BW 68
Sep 27 710

sire **RED T&S LOADED 78H** RED TRIPLE H LOADED ARAB 31D
RED T&S MISS HIGH TOP 14E

dam **RED BLAKE'S MISS LANA 50H** RED TR COUPE DE VILLE 33D
RED BLAKE'S MISS LANA 177E

CE	BW	WW	YW	MCE	MILK
7.0	-1.0	35	59	8.0	21

- Heifer's 1st calf
- made just right for a heifer bull.
- **BLAKE** dam doing really well here.

Lot
87



Lot
87K

Red DFCC 95G **KIEFER** 87K
2267976 DFCC 87K February 18, 2022

performance

BW 92
Sep 27 860

sire **RED COCKBURN PENDLETON 9095** RED SVR CONTINENTAL 112E
RED COCKBURN CORA 326A

dam **RED U2 GOLD EDGE 163E** RED TR ROLLS ROYCE 44B
RED U-2 GOLD EDGE 283B

CE	BW	WW	YW	MCE	MILK
-1.0	2.9	50	92	4.0	25

- MEAT MACHINE ... will add pounds!
- Big everything here- guts, nuts and butt.
- Powerful dam with correct udder.

Thank you

TO EVERYONE FOR YOUR INTEREST IN THE 14TH ANNUAL DOUBLE 'F' BULL SALE

Take Advantage of our **SIGHT UNSEEN PROGRAM** Call Kelly for more information 306-747-7498

Lot
107



Lot
107K
performance
BW 78
Sep 27 770

Red DFCC 683H **KORB** 107K
2268277 DFCC 107K March 06, 2022

sire **RED CINDER BRAVO 683H** RED COCKBURN ASSASSIN 624D
RED CINDER LASHES 883E
dam **RED U-2 GEORGINA 483B** RED U2 MISSION 61W
RED U-2 GEORGINA 246M

- A typical **CINDER** son stamped all the same ... admired for hair, style, completeness and soundness.
- Younger bull gives up nothing to the rest.

CE	BW	WW	YW	MCE	MILK
2.0	1.5	48	86	4.0	25

Your money just got smarter.

Affinity
Credit Union

Tricia Bell B.Comm
AGRICULTURE ACCOUNT MANAGER

p: 306.747.6302 f: 306.747.3161
tricia.bell@affinitycu.ca

31 Main St., Box 204, Shellbrook, Sask S0J 2E0
TeleService* 306.934.4000 866.863.6237

affinitycu.ca

miEnergy

Agricultural, Commercial and Utility Scale Solar

Discover how putting the sun to work on your farm can save you money and offer energy independence.

mienergy.ca sales@mienergy.ca 306-683-2247

Terms and conditions

TERMS: The terms of the sale are cash or cheque, payable at par at the sale location. The right of property shall not pass until after settlement has been made; no invoicing on buyers in attendance unless previous arrangements have been made. Every animal sells to the highest bidder and in cases of dispute the auctioneer's decision will be final. Announcements from the auction block will take precedence over the printed matter in the catalogue. Current exchange rates will be announced sale day. All monies are in Canadian funds.

CERTIFICATE OF REGISTRATION: Each animal will carry papers issued by the Canadian Angus Association. A certificate of registry duly transferred will be furnished to the buyer for each animal after payment has been made.

HEALTH: All animals in the sale have met all necessary health requirements.

GUARANTEE: Each animal becomes the purchaser's risk immediately after the animal is sold. All animals in this sale will be sold under the terms and guarantees set forth by the Canadian Angus Association with regard to health, freedom from defects and from both reproductive and specific genetic unsoundness.

LIABILITIES: All persons attend the sale at their own risk. The sellers, facility owner, auctioneer and sale manager assume no liability, legal or otherwise, for any accidents that occur.

DELIVERY: Every assistance will be given in getting your purchases home. Free delivery up to 250 miles. Each animal becomes the risk of the purchaser as soon as sold.

PHONE, WIRE, MAIL BIDS: Bidders unable to attend the sale may phone, wire or mail their bids and instructions to the sale manager, auctioneer or special representatives. Bids must be received in sufficient time prior to the sale.

INSURANCE: Agents will be in attendance to insure your purchases. Bulls returning to the consignor's farm must be insured.

THE RIGHT TO COLLECT SEMEN: Double 'F' Cattle Co. reserves the right to collect semen on any of the bulls sold at their expense and the buyer's convenience.

ERRORS: All announcements at sale time, written or oral, supersede any written material in the catalogue.

AFFORDABLE LIVESTOCK EQUIPMENT

www.affordablelivestockequipment.com

1-844-500-5341 - Delivery and Leasing Available



Continuous fencing panels to be mounted on posts



Freestanding panels for cattle, bison, horses, sheep & goats



Tombstone



Standard



Skirted



Haysavers



Shelters



Swinging Gates



Fenceline Bunk Feeders



Double Sided Bunk feeders



Grain Troughs



Windbreaks

CFS QUEENETTE 3T



*Tyler Harris
Photography.com*

Thank You 3T

This year, we said good bye to 3T. 3T was purchased out of the Clark Dispersal Sale in 2010. At the sale, the boys each got to pick a cow to buy and 3T was Jake's pick.

3T was a perfect pick for a 10 year old boy as she would go on to produce many high selling bulls and excellent replacement females. The Queen as she was referred to here was a very special part of Double 'F' and will be missed!

RIVERSIDE

HOME OF THE "NO BULLSH*T PRICING"



306-764-4217



160 38TH ST E,
PRINCE ALBERT, SK S6W 1A6



WWW.RIVERSIDEDODGE.CA

PROUD TRUCK SPONSOR OF
LEGENDARY BULLFIGHTER TANNER BYRNE
AND THE #NFP PODCAST



Double F Cattle Co.
Box 50
Parkside, SK S0J 2A0

SEE YOU AT THE SALE March 25

